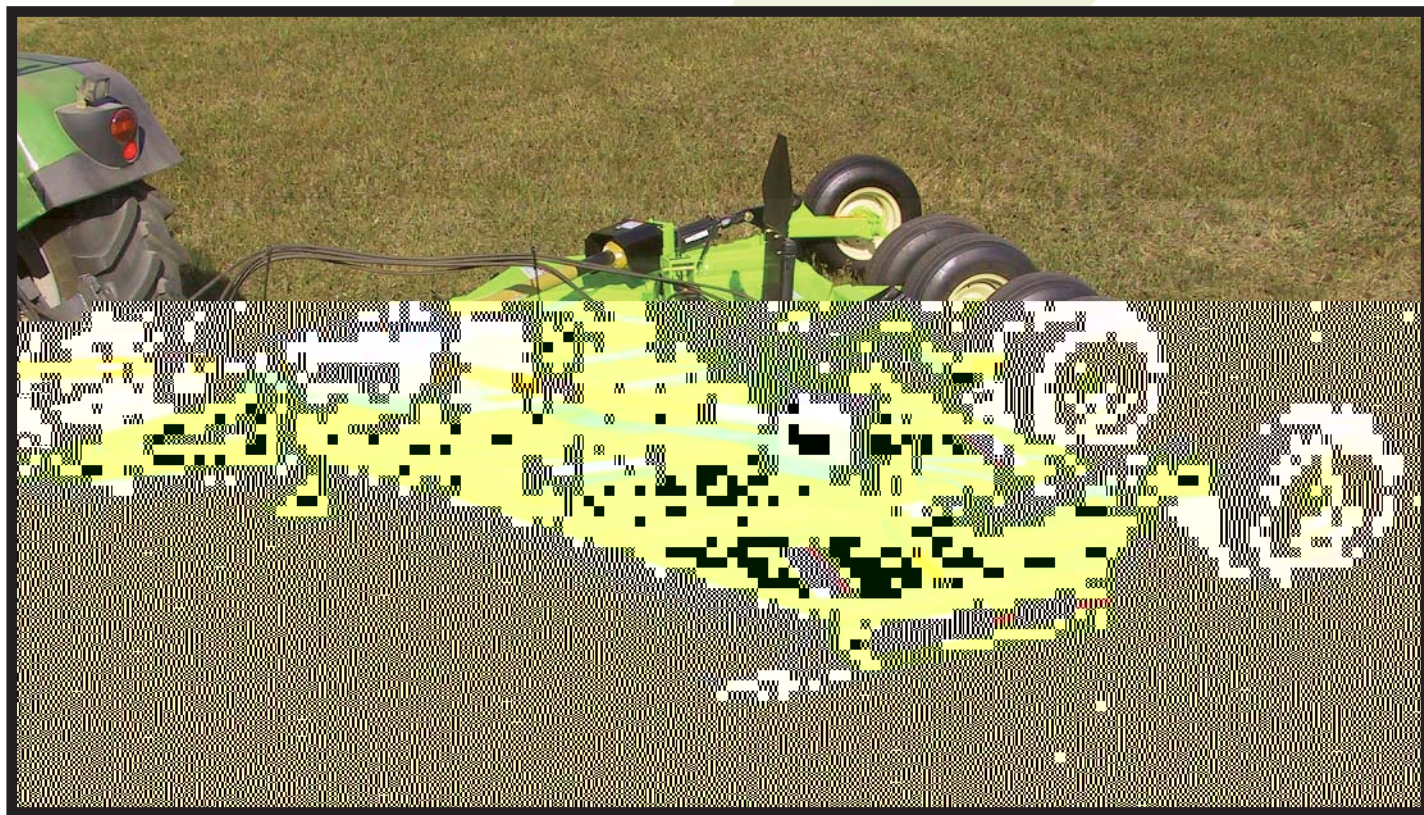


# SCHULTE®

## \$150/\$100 ROTARY CUTTERS



- Turf unit shown above -



- S100 unit shown above -

### Heavy Duty Mower at a Mid Range Price 7 Gauge Continuously Welded Deck

- 1 Mechanical free floating hitch and wing frames.
- 2 Six inch blade overlap and high blade tip speeds.
- 3 A four gearbox drive line with independent slip clutches.
- 4 An 80° constant velocity drive shaft is standard and allows smooth operation in tight turns.
- 5 Round skid pans (stump jumpers).
- 6 Available in 540 or 1000 RPM drive.

G O N U M B E R O N E . . . G O S C H U L T E !

# Heavy Duty Mower at a Mid Range Price With Optional Mulching Kits

Schulte's S150 / S100 Cutters feature superior cutting performance. The flexibility to handle uneven terrain and rugged construction with continuously welded 3/16" decks. The S150/S100 is proof that Schulte makes top quality, affordable.

SPECIFICATIONS	S150	S100
Cutting width	180" (4.57 m)	126" (3.20 m)
Overall width	190" (4.82 m)	136" (3.45 m)
Overall length	196" (4.97 m)	196" (4.97 m)
Trans. width below wing tires	96" (2.43 m)	90" (2.28 m)
Transport height	84" (2.13 m)	84" (2.13 m)
Deck thickness	7GA (3/16")	7GA (3/16")
Approximate weight	4400 lbs (2000 kg)	4200 lbs (1909 kg)
Minimum tractor HP	65 HP (50 kW)	50 HP (40 kW)
Recommended tractor HP	85 HP (65 kW)	75 HP (55 kW)
Cutting height	1.5" - 15" (38 mm - 381 mm)	
Ground clearance	13.5" (343 mm)	
Cutting capacity	3.5" material (89 mm)	
Blade overlap	6" (153 mm)	
Divider gearbox rating	200 HP (160 kW)	
Wing gearbox rating	160 HP (128 kW)	
Blade speed, 540 rpm		
Centre	810 RPM-15,268 ft/min	
Wing	940 RPM-15,458 ft/min	
Blade speed, 1000 rpm		
Centre	800 RPM-15,702 ft/min (4786 m/mm)	
Wing	1000 RPM-15,708 ft/min (4789 m/mm)	
Wing working range	25° down to 90° up	

## OPTIONS

Solid, light truck, aircraft, or 9.5L pneumatic tire kit, single or double safety chains, hydraulic phasing cylinder kit, manual winch kit, spool valve kit, shredder blade kit, 1000 or 540 rpm drive packages, precision hitch, fixed blade shredder kit, sod kit, material distribution kit, safety light kit.



Standard stump jumpers



Turf kit



Fixed knife unit with distribution kit

## STANDARD FEATURES

80° Constant velocity u-joint, height adjustment center cylinder c/w hoses, round skid pans (stump jumpers), wing lift cylinders, ratchet jacks for wing height adjustment, four gear box drive with forward splitter box and full floating front hitch.

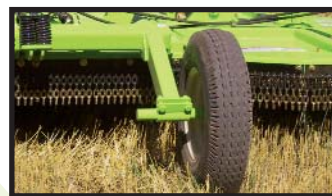
**Mechanical free floating hitch and wings frames** allow the cutter to more easily clear obstructions. Six inch blade overlap and high blade tip speeds ensure clean cutting.



Floating hitch & center spring suspension



Wing suspension



Adjustable wheel standards



Floating Wing Lug allows movement of 25° down to 35° up

Schulte Industries Ltd. reserves the right to change the design, material and specifications of its products without notice. Illustrations may include optional equipment and accessories, and may not include all standard equipment. Part No. 1000-154

**Sold By:**

# SCHULTE®

**Schulte Industries Ltd.,**  
P.O. Box 70, Englefeld Saskatchewan, Canada S0K 1N0  
Tel: (306) 287-3715 Fax: (306) 287-3355  
E-Mail: info@schulte.ca  
Visit our Web site at: www.schulte.ca